

DirectMet[®]2 Cloud™

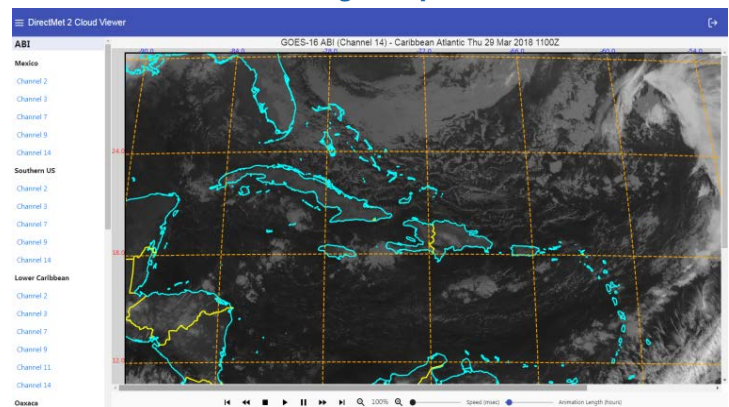
Professional Weather Tools for Meteorology, Aviation, and Product Generation

GST's low-cost, web-based, customized data and product dissemination service

DirectMet[®]2 Cloud™ is a service provided by Global Science & Technology, Inc. (GST) that disseminates satellite data and products produced at GST. This service is perfect for those organizations who need customized Geostationary Operational Environmental Satellite (GOES) Rebroadcast (GRB) data and imagery, but without the cost of obtaining a complete ground station. DirectMet[®]2 Cloud™ delivers critical GOES-EAST satellite imagery and data directly into your operational environment on a regular schedule.

DirectMet[®]2 Cloud™ is an annual subscription with license to use the product in the purchaser's operational environment without restriction on facility or number of users within the purchasing organization.

DirectMet[®]2 GOES-EAST Imagery Used in Meteorological Operations



DirectMet[®]2 Cloud™ Viewer

Imagery Service

The DirectMet[®]2 Cloud™ imagery service for GOES-EAST includes a baseline of projections and channels of ABI/GLM imagery that are of the user's choice. The user can customize the projections to any defined geographical area that is a subset of the full disk.

The GOES-EAST satellite imagery is in PNG format and can be viewed on PC web browsers with the DirectMet[®]2 Cloud™ Viewer, which has full zoom/pan and animation capability. From this viewer, users can also download images and animations directly onto their PC to save for future use or reference.

The DirectMet[®]2 Cloud™ imagery service is also capable of disseminating additional satellite products from GOES-EAST, including Global Lightning Mapper (GLM) imagery and Level 2+ derived products. The imagery service can also include aviation weather products (icing/cb/turb) that are created at GST and available to supplement the satellite imagery. The service is scalable -- the user can add additional channels, projections, and products to the delivery content.

Data Service

The DirectMet[®]2 Cloud™ data service is a license to receive GOES-EAST GRB data in netCDF4 format for DirectMet[®]2 workstations or other Geographic Information Systems (GIS) that are in the user's operational environment.

As part of this data service, GST generates a netCDF4 file from GOES-EAST signal every 5 minutes for the Contiguous United States (CONUS) sector and every 15 minutes outside of CONUS. The netCDF4 file includes GRB ABI channels on a subset of the full disk, which typically is centered on an operational area of interest of the purchasing organization. The netCDF4 files can be augmented to include Level 2 GLM data and other derived products from GOES-EAST.