



DirectMet®2 Cloud Commercial Weather Applications

Features

Benefits

- Helps weather professionals get the data they need to make weather forecasts, ensure flight safety, and manage water resources
- Provides a low-cost solution that requires no ground station

Provides imagery and data from GOES-East

- Satellite imagery (ABI/GLM)
- GRB data in NetCDF4
- NetCDF4 files can be used in other GIS systems

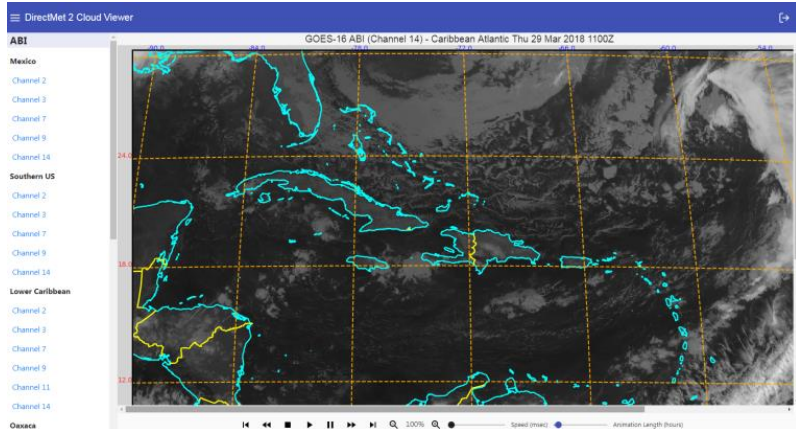
Display Options

- Customizable projections
- Zoom and Pan
- Animations

DirectMet®2 Cloud Overview

For more than 25 years, GST's Weather Group has developed commercial weather systems that include meteorological and satellite data processing workstations and installed them in more than 35 countries. These professional weather tools provide weather professionals with the ability to process, organize, integrate, and view the data they need to make weather forecasts, ensure flight safety, manage water resources, and generate products.

DirectMet®2 Cloud™ is a service that disseminates satellite data and products that are produced at GST. This service is perfect for those organizations who need customized GOES Rebroadcast (GRB) data and imagery, but without the cost and upkeep of a complete ground station. DirectMet®2 Cloud™ delivers critical GOES-East satellite imagery and data directly into your operational environment on a regular schedule. DirectMet®2 Cloud™ is an annual subscription with a license to use the product in your operational environment without restriction on the number of users. The DirectMet®2 Cloud Ecosystem is a collection of tools, technologies, and web services that enable consumers to access GOES-East products in new ways. The DirectMet®2 Cloud Ecosystem leverages a microservices architecture framework to provide a highly scalable, reliable GOES-East direct readout system that can be run anywhere from a local machine to a distributed cloud system.



DirectMet®2 Cloud Viewer

Imagery Service: The DirectMet®2 Cloud™ imagery service for GOES-East includes a baseline of projections and channels of ABI/GLM imagery that are of the user's choice. The user can customize the projections to any defined geographical area that is a subset of the full disk. The GOES-East satellite imagery is in PNG format and can be viewed on PC web browsers using the DirectMet®2 Cloud™ Viewer, which has full zoom/pan and animation capability. From this viewer, users can also download images and animations directly onto their PC to save for future use or reference. The DirectMet®2 Cloud™ imagery service is also capable of disseminating additional satellite products from GOES-East, including Global Lightning Mapper (GLM) imagery. The service is scalable -- the user can add additional channels, projections, and products to the delivery content.

Data Service: The DirectMet®2 Cloud™ data service is a license to receive GOES-East GRB data in netCDF4 format for METLAB2™ workstations or other Geographic Information Systems (GIS) that are in the user's operational environment. As part of this data service, GST generates a netCDF4 file from GOES-East signal every 5 minutes for the Contiguous United States (CONUS) sector and every 10 minutes outside of CONUS. The netCDF4 file includes GRB ABI channels on a subset of the full disk, which typically is centered on an operational area of interest of the purchasing organization. The netCDF4 files can be augmented to include Level 2 GLM data from GOES-East.